

OVER 3.2 GW SOLD

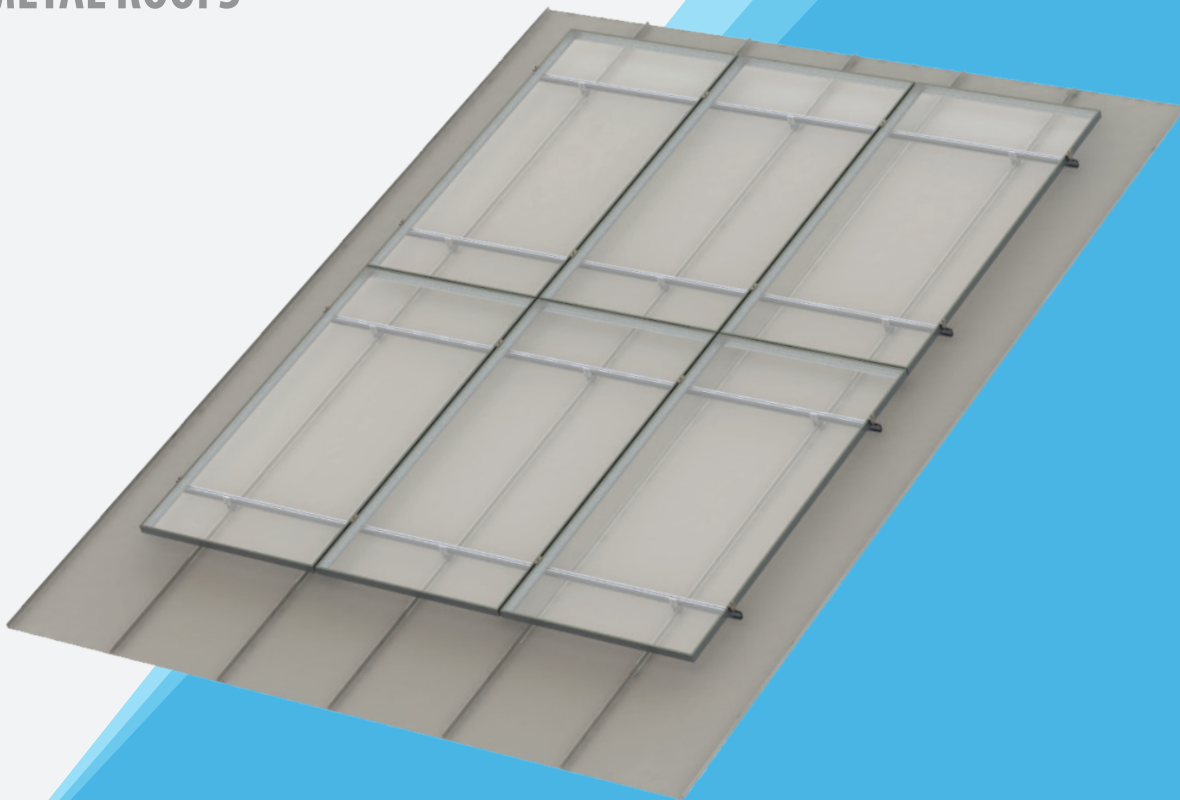
Every System For Your Every Need



STANDING SEAM ROOF SYSTEM

FAST INSTALLING, COST-EFFECTIVE,
BALLAST FREE, COMPLETE SOLUTION
FOR METAL ROOFS

TECHNICAL
DATASHEET



FAST INSTALL WITH MINIMAL COMPONENTS

Available in both 1 & 2 panels up in portrait

Seam clamps available for standard metal seam roofs

Supports all poly modules for all vendors

Includes rails, rail jumpers, L-feet, seam clamps,
panel clamps and all hardware

Integrated grounding and
wire management

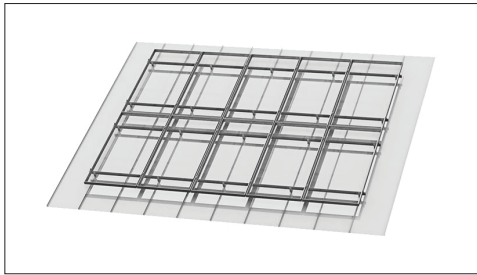
Full layout and engineering
analysis for every project

ZERO BALLAST
NO PENETRATIONS



OVER 3.2 GW SOLD

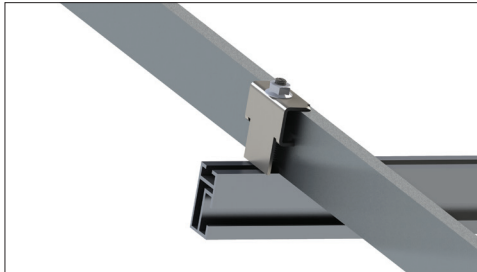
Every System For Your Every Need



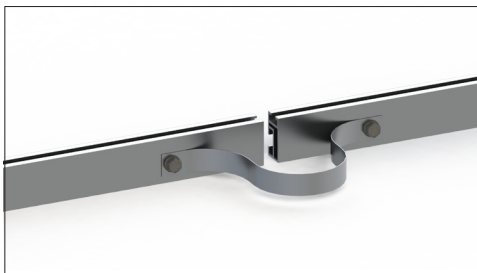
Minimal components lead to quick deployment of system



Rail mount includes rails, rail jumpers, L-feet, seam clamps, self grounding UL listed panel clamps & all hardware



UL listed panel clamps bond module frames to racking assembly



Aluminum jumper strip provided for bonding rails

Features

- Fast install with minimal components
- Fire proof, durable aluminum and stainless steel components
- Zero ballast and no penetrations
- Aluminum jumper strip provided for bonding rails
- Full layout and engineering analysis for every project

Test & Certification

- Unique design innovations with patents pending
- ETL / UL 467 GameChange teethed module clips included
- Rated for 175 mph [78 m/s] wind and 90 psf [4.3 kPa] ground snow load
- Meets IBC and ASME standards for structural loading
- Warranty 20 years

Calculations

- 100% code compliant designs for any locality
- Structural PE stamped drawings and calculations
- Design loads according to any state or local building code

Material

- Rails: 6005 aluminum, seam clamps: 6061 aluminum
- L feet: aluminum
- Hardware: Stainless steel or magnacoat steel

Distribution Load

- Typical roof loading: panel weight plus .3 psf [.01Pa] for racking

Grounding

- Racking system has UL 2703 integrated grounding utilizing UL 467 listed teethed panel clips and jumpers provided by GameChange at the end of each row

Panel Spacing

- .25 to .50" [6.3 to 12.7 mm]

***Disclaimer:** GameChange Solar provides this documentation without warranty in any form either expressed or implied. GameChange Solar may revise this document at any time without notice.

GameChange Solar

152 W 57 Street 17FL New York, NY 10019
Email: info@gamechangesolar.com

Phone: 212-388-5160
Fax: 646-607-2223