

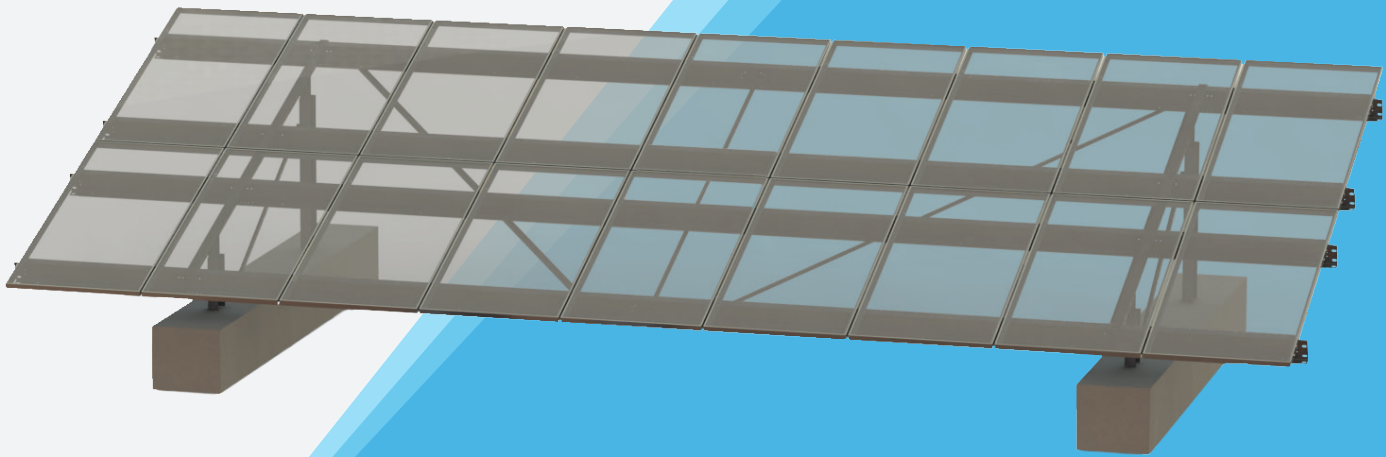
**OVER 3.2 GW SOLD**  
Every System For Your Every Need



# PRECAST BALLASTED GROUND

FAST INSTALLING SOLAR MOUNTING SYSTEM  
FOR LANDFILL SITES

**TECHNICAL  
DATASHEET**



## LANDFILL AND BROWNFIELD LEADER

Available in both 1 & 2 panels up in portrait

Industry's longest spans and fewest foundations:  
as few as 190 per MW

Supports all poly and thin film panels for all vendors

Integrated grounding and wire management

Foundations may be  
precast at site or nearest  
precast location

Full layout and engineering  
analysis for every project

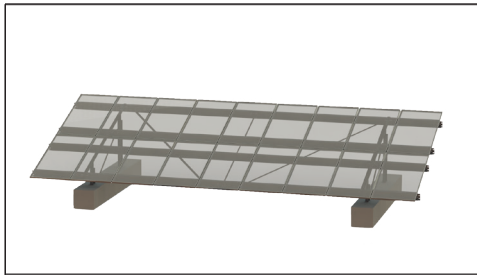
## 8" VERTICAL ADJUSTMENT

INTEGRATED GROUNDING  
& WIRE MANAGEMENT



# OVER 3.2 GW SOLD

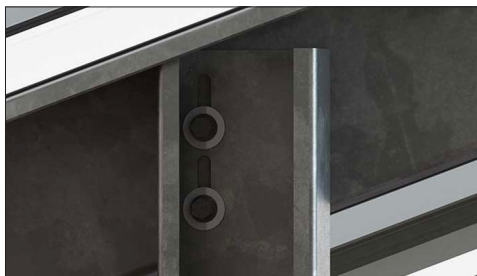
Every System For Your Every Need



Fast installing solar mounting system for landfill sites



Articulating purlin connections to navigate up to 15% terrain slopes



Slots enable vertical adjustability



Galvanized purlins with large wire management tray

## Features

Up to 4 ft. [1.2 m] high ground clearance to allow for snow and vegetation

5 to 35° tilt with multiple inter-row spacing options

Full layout and engineering analysis for every project

51% overall lower cost than competitors

Integrated grounding and wire management

Up to 8" [20 cm] total vertical adjustability using post extender option including use of integrated slots

Articulating purlin connections to navigate up to 15% terrain slopes

## Test & Certification

- Wind tunnel tested by industry leader CPP & rated for 175mph [78 m/s] wind speed
- Independent assessment by Black & Veatch
- Rated up to 90 psf [4.3 kPa] snow load
- ETL / UL 2703 tested
- Meets IBC and ASME standards for structural loading
- Warranty 20 years

## Calculations

- 100% code compliant designs for any locality
- Structural PE stamped drawings and calculations
- Individual system structural calculations
- Loads designed according to IBC 2006 or 2009

## Material

- Rail support structure components: G90+ galvanized steel
- Panel mounting rails: G90+ galvanized steel (aluminum also available)
- 3/8" magnacoat bolts and serrated flange nuts
- Panel mounting hardware: top mount - panel mounting clips: stainless steel UL 467 teathed clips 1/4" - 20 x 1.5" to 2.5" T bolts, 1/4" - 20 serrated flange nuts: stainless steel bottom mount: 1/4" - 20 x 3/4" T bolts, 1/4" - 20 serrated flange nuts, star washers: stainless steel

## Grounding

- Integrated grounding with star washers or teathed module clamps included - both approved under ETL / UL 2703
- Grounding must be done by electrician at row ends

**\*Disclaimer:** GameChange Solar provides this documentation without warranty in any form either expressed or implied. GameChange Solar may revise this document at any time without notice.

### GameChange Solar

152 W 57 Street 17FL New York, NY 10019

Email: [info@gamechangesolar.com](mailto:info@gamechangesolar.com)

Phone: 212-388-5160

Fax: 646-607-2223

Rev. 5 - 23 - 2018 | © 2018 GameChange Solar | 152 West 57th Street 17 Flr, New York, NY 10019 | +1 212-388-5160 | [gamechangesolar.com](http://gamechangesolar.com)