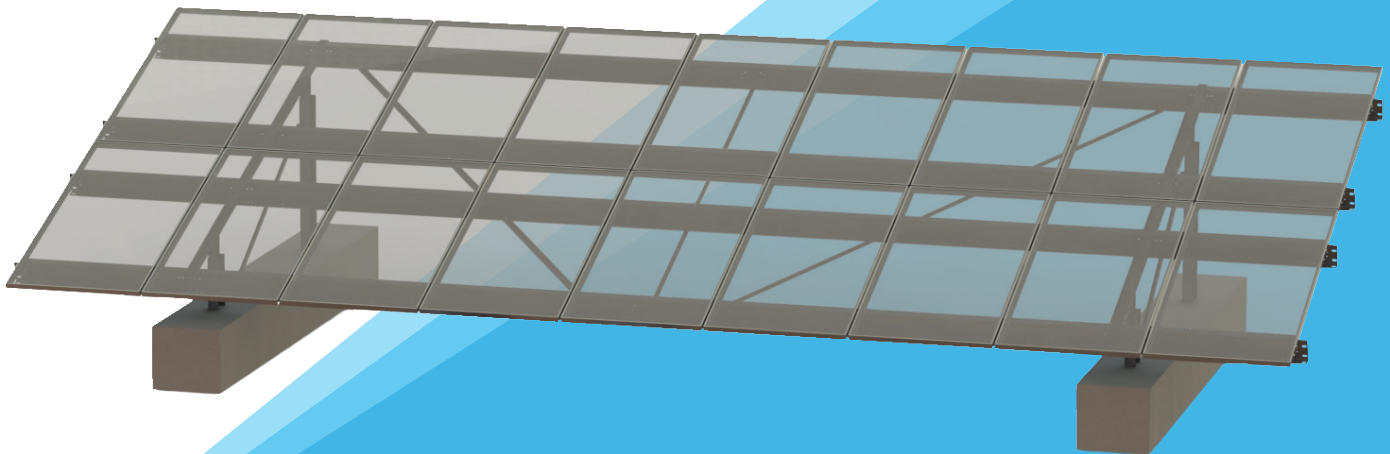


TECHNICAL DATASHEET

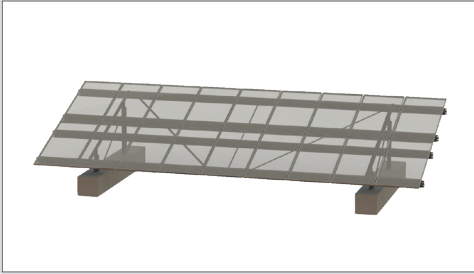
**PRECAST™**  
**BALLASTED GROUND SYSTEM**

FAST INSTALLING SOLAR MOUNTING  
SYSTEM FOR LANDFILL SITES



**LANDFILL AND BROWNFIELD LEADER**

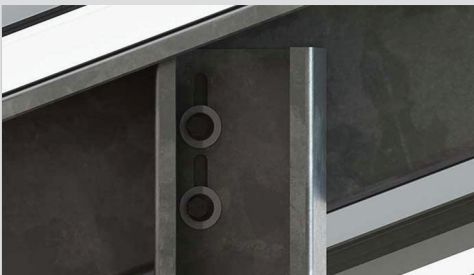
- 8" [20.3 cm] Vertical Adjustment
- Integrated grounding & wire management
- Industry's longest spans and fewest foundations: As few as 190 per MW
- Supports all poly and thin film panels for all vendors
- Integrated grounding and wire management
- Foundations may be precast at site or nearest precast location
- Full layout and engineering analysis for every project



Fast installing solar mounting system for landfill sites



Articulating purlin connections to navigate up to 15% terrain slopes



Slots enable vertical adjustability



Galvanized purlins with large wire management tray

## FEATURES

- Up to 4 ft. [1.2 m] high ground clearance to allow for snow and vegetation
- 5 to 35° tilt with multiple inter-row spacing options
- Full layout and engineering analysis for every project
- 51% overall lower cost than competitors
- Integrated grounding and wire management
- Up to 8" [20 cm] total vertical adjustability using post extender option including use of integrated slots
- Articulating purlin connections to navigate up to 15% terrain slopes

## TEST & CERTIFICATION

- Wind tunnel tested by industry leader CPP and rated for 175 mph [78 m/s] wind speed
- Independent assessment by Black & Veatch
- Rated up to 90 psf [4,300 Pa] snow load
- ETL / UL 2703 tested (similar to the relevant sections of IEC 61215 & 61730)
- Meets IBC and ASCE standards for structural loading
- Warranty 20 years - Designed and Engineered in USA

## CALCULATIONS

- PE Stamped Drawings - Design loads according to local building codes: ASCE 7, NBC, Eurocode, AS1170, GB 50009
- 100% code compliant designs for any jurisdiction
- Available 2 or 3 up in portrait and 4 or 6 up in landscape poly as well as multiple glass on glass module configurations including First Solar Series 4™ & First Solar Series 6™

## MATERIAL

- Rail support structure components and module mounting rails: G90+ [20 µm] galvanized steel. Standard up to G180 [40 µm] special order.
- Magnicoat bolts and serrated flange nuts for structural member connections
- Module mounting hardware - Top mount: module mounting clips & serrated flange nuts: magnicoat. Bottom mount: hex bolts, serrated flange nuts, star washers: magnicoat
- Integrated grounding with star bolts or teethed module clamps included - both approved under ETL / UL 2703, (similar to the relevant sections of IEC 61215 & 61730)
- Proprietary Integrated Hardware™: For faster structure assembly, module mounting and reduced O&M cost. Oversized Serrated Flange Nyloc Nut and Oversized Flange Star Bolt with integrated star washer eliminates the need for washers and star washers.

### GameChange Solar

**HEADQUARTERS**  
230 East Ave, Suite 100  
Norwalk, CT, USA  
Phone: +1 (203) 769-3900  
Fax: +1 (646) 607-2223  
gamechangesolar.com  
media@gamechangesolar.com

**EUROPE OFFICES**  
Dublin, Ireland  
Zug, Switzerland  
Madrid, Spain

**RESEARCH & DEVELOPMENT CENTER**  
Brimfield, MA, USA

**ASIA OFFICES**  
Wuxi, China  
Mumbai, India  
Dubai, UAE

**SERVICE SUPERCENTERS**  
Lakeland, FL, USA  
Mesa, AZ, USA