

TECHNICAL DATASHEET

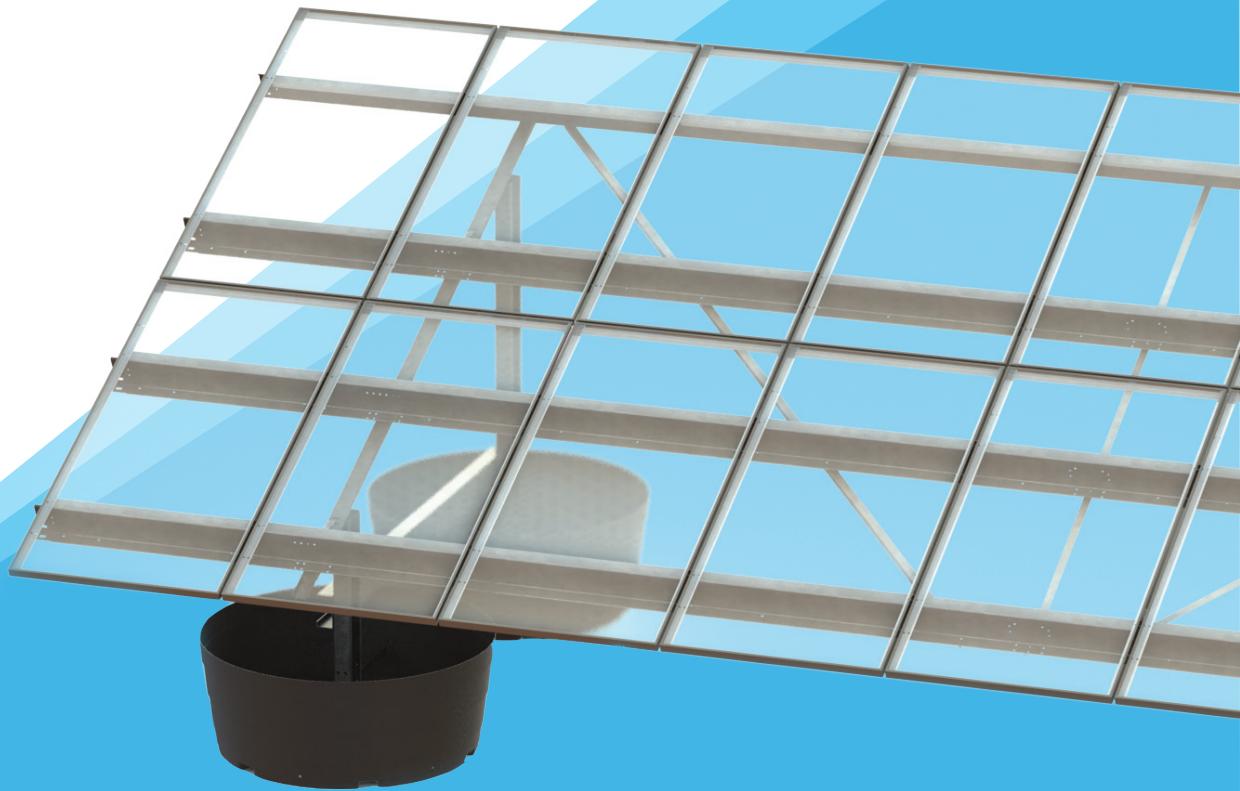
POUR-IN-PLACE™
BALLASTED GROUND SYSTEM

LANDFILL LEADER AND
BEST SOLUTION FOR ROCKY SITES

PLACE
LEAVE BEHIND TUBS

BUILD
SELF LEVELING RACKING

POUR
STANDARD CONCRETE



WHY FIGHT ROCKY GROUND WITH POSTS OR SCREWS?

- **68% FASTER THAN PRECAST**
- **MINIMAL IMPACT ON DRAINAGE**

POUR-IN-PLACE™ BALLASTED GROUND SYSTEM

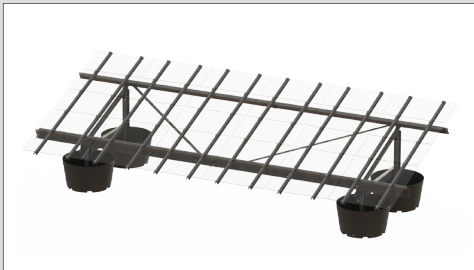
- ✓ Complete your site on time and on budget
- ✓ Peace of mind with risk-free install
- ✓ Up to 20% lower install racking cost than screw or post systems

SCREW OR POST SYSTEMS

- ✗ Slow drilling needed for every hole
- ✗ Slow and uncertain install timeline and budget
- ✗ Up to 25% higher install racking cost for screw or post systems



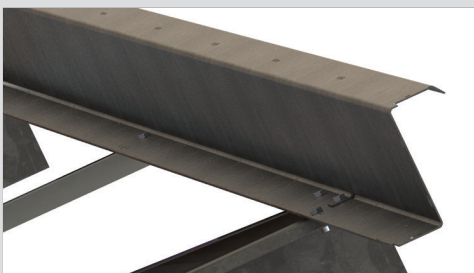
Pour-in-Place™ Ballasted Ground System has self-leveling technology which enables fast install



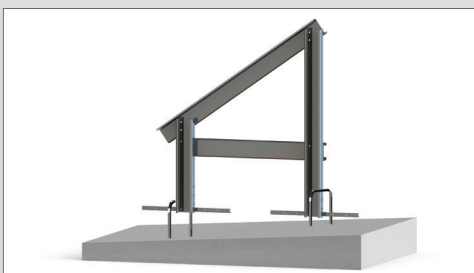
Pour-in-Place™ thin film panel clamps mount using socket head bolts



Slots combine with rail support self-leveling technology enables up to 7" [18 cm] vertical adjustment



Galvanized purlins with integrated wire management tray



Large hoop-shaped brackets slide to enable over 7" [18 cm] of vertical adjustment to facilitate install on ground sloping in all directions

FEATURES

- Pour-in-Place™ Ballasted Ground System: less concrete, faster install, steeper slopes
- Substantial adjustability allows for slopes up to 15%
- Self-leveling technology enables up to 7" [18 cm] total vertical adjustability including use of slots
- No gravel beds or other expensive ground preparations required for leveling as needed for precast - save up to USD 0.05/watt
- Up to 4'-0" [122 cm] high ground clearance to allow for snow and vegetation
- 10° to 35° tilt with multiple inter-row spacing options
- Full layout and engineering analysis for every project
- Integrated grounding and wire management

TEST & CERTIFICATION

- Wind tunnel tested by industry leader CPP and rated for 175 mph [78 m/s] wind speed
- Independent assessment by Black & Veatch
- Rated up to 90 psf [4,300 Pa] snow load
- ETL / UL 2703 tested (similar to the relevant sections of IEC 61215 & 61730)
- Meets IBC and ASCE standards for structural loading
- Warranty 20 years - Designed and Engineered in USA

CALCULATIONS

- PE Stamped Drawings - Design loads according to local building codes: ASCE 7, NBC, Eurocode, AS1170, GB 50009
- 100% code compliant designs for any jurisdiction
- Individual system structural calculations

MATERIAL

- Rail support structure components and module mounting rails: G90+ [20 µm] galvanized steel. Standard up to G180 [40 µm] special order.
- HMWPE forms
- Magnicoat bolts and serrated flange nuts for structural member connections
- Module mounting hardware - Top mount: module mounting clips & serrated flange nuts: magnicoat. Bottom mount: hex bolts, serrated flange nuts, star washers: magnicoat
- Integrated grounding with star bolts or teathed module clamps included - both approved under ETL / UL 2703, (similar to the relevant sections of IEC 61215 & 61730)
- Proprietary Integrated Hardware™: For faster structure assembly, module mounting and reduced O&M cost. Oversized Serrated Flange Nyloc Nut and Oversized Flange Star Bolt with integrated star washer eliminates the need for washers and star washers.

GameChange Solar

HEADQUARTERS
152 W 57th Street 44th Fl.
New York, NY 10019, USA
Phone: +1 [212] 388-5160
Fax: +1 [646] 607-2223
media@gamechangesolar.com
gamechangesolar.com

ASIA OFFICE
Shanghai, China

EUROPE OFFICES
Dublin, Ireland
Zug, Switzerland
Madrid, Spain

DISCLAIMER: GameChange Solar provides this documentation without warranty in any form either expressed or implied. GameChange Solar may revise this document at any time without notice.