

OVER 3.2 GW SOLD

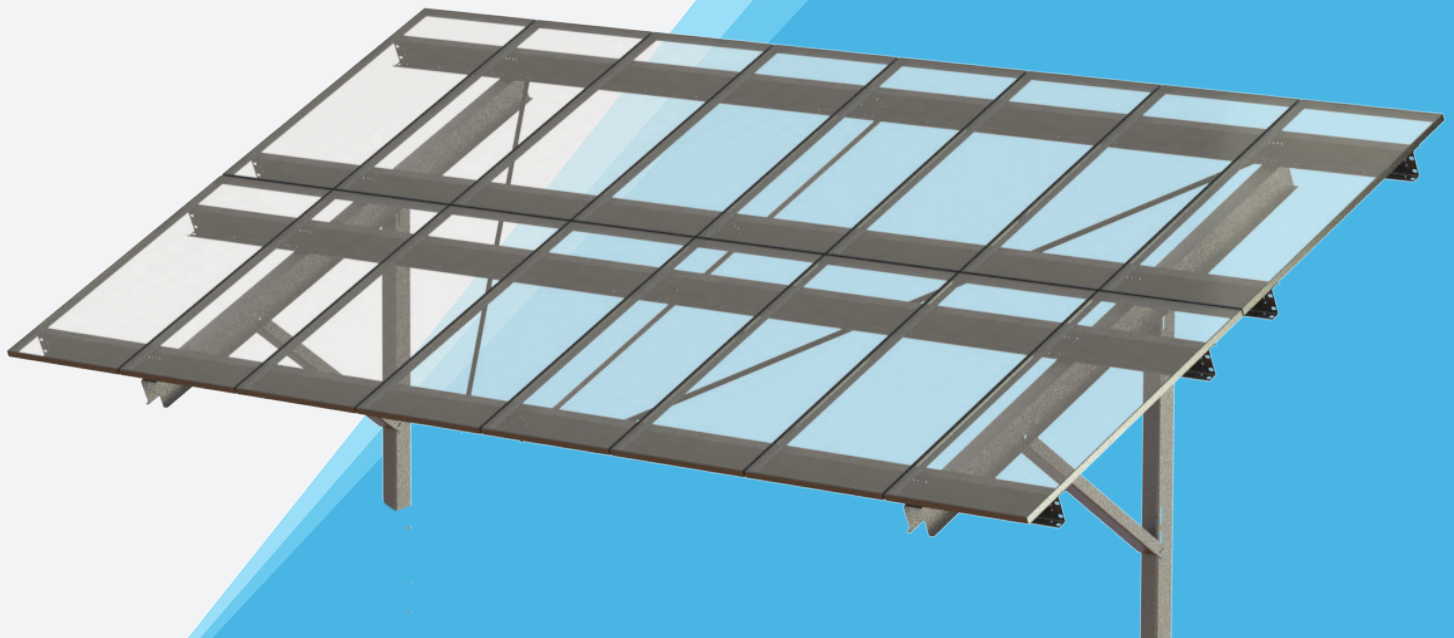
Every System For Your Every Need



MAXSPAN™ **PILE DRIVEN SYSTEMS**

**BEST QUALITY AND PRICED PILE DRIVEN
FIXED TILT SYSTEMS**

**TECHNICAL
DATASHEET**



FAST INSTALL & HANDLES SLOPING GROUND

Supports all poly, glass and thin film modules

Rugged design enables 175 mph [78m/s] wind
and 90 psf [4kPa] snow loads

Turnkey install, pull test and geotech services available

Galvanized Z purlins have
integrated trays for easy
wire management

5° to 35° tilt with multiple
inter-row spacing options

LESS PILES
UNMATCHED SPAN
UP TO 15%
TERRAIN SLOPES



OVER 3.2 GW SOLD

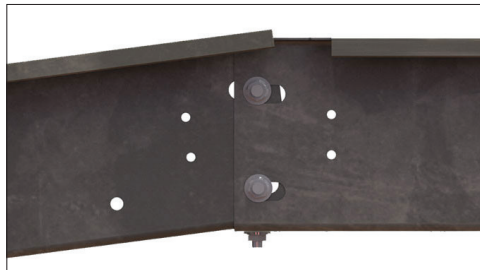
Every System For Your Every Need



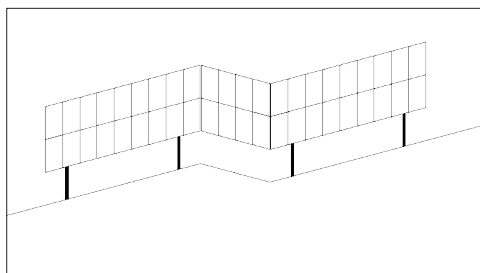
MaxSpan™ FastBuild's rugged beam and brace rapidly attach to pile with just six bolts and nuts - fewest parts in the industry



MaxSpan™ WideFlange's telescoping post bracket with up to 5 inches vertical adjustment for fast top of pile leveling



Patent pending articulating purlin connection to navigate sloping terrain



Articulating purlin connections to navigate up to 15% terrain slopes

Features

Three axes of adjustability demanded by installers for navigating real world site conditions where significant adjustability in the field is required

The unmatched span capability of MaxSpan™ means there are fewer foundations than competing systems, which means less piles and less pile installation cost. As few as 190 piles per MW

Up to 4 ft. [122cm] high ground clearance to allow for snow and vegetation

5° to 35° tilt with multiple inter-row spacing options

Full layout and engineering analysis for every project

Integrated grounding and wire management

MaxSpan™ FastBuild

StickyPile™: G235 galvanized steel (HDG available), purlins, beams & braces: G90 galvanized steel

20 men install 1.55MW per week

Standard system has 6" + 3.5" [15 + 9cm] vertical adjustability

MaxSpan™ Wide Flange

Industry's most flexible racking system handles undulating ground conditions

Telescoping post bracket with over 5" [13cm] vertical adjustment for fast top of pile leveling

Multiple options available with Wide Flange

Test & Certification

- Meet IBC and ASCE standards for structural loading
- ETL / UL 467 GameChange top mount clamps or star washers included
- ETL / UL 2703 tested
- Wind tunnel tested by industry leader CPP
- Independent assessment by Black & Veatch
- Warranty 20 years - Made in USA

Calculations

- 100% code compliant designs for any locality
- Structural PE drawings & calculations for foundation & racking structure
- Available 2 up in portrait and 4 up in landscape poly as well as multiple glass on glass module configurations incl. First Solar Series 4 & 6™
- Design loads according to IBC 6 ASCE

Pull Test, Geotech & Installation Services

- Free pull test on orders over 5 MW
- Vertical and lateral capacity of the post is determined by pull test
- Test data is then analyzed by our in-house engineering team in parallel with geotechnical report to give the most efficient embedment depths, spans and post type
- Turnkey installation of piles, racks and modules available

Material

- Post: G235 galvanized steel (HDG ASTM A123 option also available)
- Galvanized Purlins, NS Beam, Brace: G90 galvanized steel
- Star washer or ETL / UL top mount teathed module clamp: stainless steel

***Disclaimer:** GameChange Solar provides this documentation without warranty in any form either expressed or implied. GameChange Solar may revise this document at any time without notice.

GameChange Solar

152 W 57 Street 17FL New York, NY 10019

Email: info@gamechangesolar.com

Phone: 212-388-5160

Fax: 646-607-2223

Rev. 5 - 23 - 2018 | © 2018 GameChange Solar | 152 West 57th Street 17 Flr, New York, NY 10019 | +1 212-388-5160 | gamechangesolar.com