

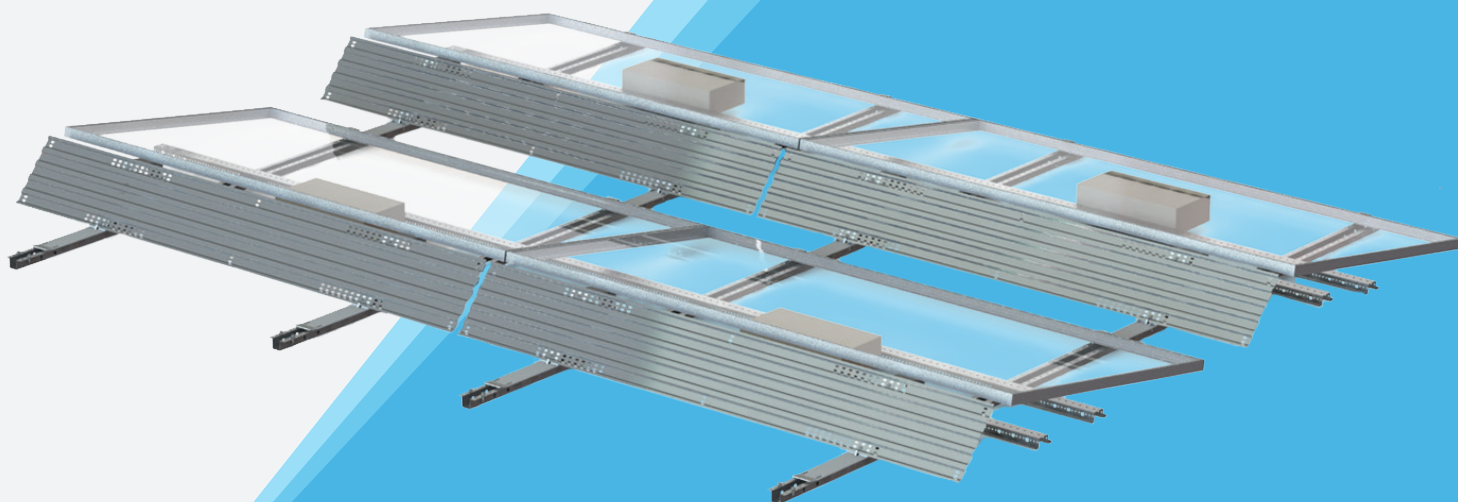
**OVER 3.2 GW SOLD**  
Every System For Your Every Need



# GRID-LITE™ ROOF SYSTEM

**COST EFFECTIVE ULTRA-LOW WEIGHT  
BALLASTED ROOF SYSTEM**

**TECHNICAL  
DATASHEET**



## MINIMAL BALLAST AND FAST INSTALL

Interlocking grid design combined with next-gen wind deflector to minimize or eliminate ballast

Industry's best system to handle most severe seismic conditions

Near zero ballast saves up to \$.02/watt

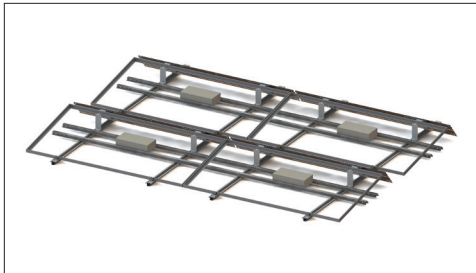
5° and 10° tilts

Durable G90 and stainless steel components

Rail to rail connections automatically square the remaining installation

**CLASS A  
FIRE RATING  
ETL / UL 2703 LISTED**





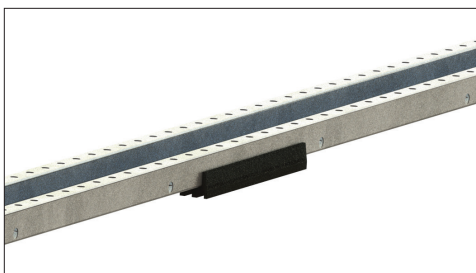
Ultra high grade, galvanized, interlocking rails install quickly to build grid



Next-gen wind deflector reduces ballast to minimal or zero



Integrated wire management trays enable string wiring throughout entire array



EPDM blocks available in place of slip sheets

## Features

- Fire proof, durable galvanized and stainless steel components
- Minimal ballast when required on edges, quickly installs with additional rail
- Ultra high grade, galvanized interlocking rails install quickly to build grid
- Typical roof loading 0 to 1 psf [48Pa] for ballast; 2.5-3.5 psf [120 Pa - 168Pa] total load including ballast, modules and racking
- Less ballast and related labor reduces total installed cost
- Stamped drawing set and engineering analysis for every project
- EPDM blocks available where additional clearance to rooftop is required
- Unique design protected under patent pending

## Test & Certification

- Class A fire rating tested by ETL to UL 2703: Covers essentially all commercially available modules (Fire guards optional at additional cost)
- ETL / UL 2703 listed
- Independent assessment by Black & Veatch
- 60 psf [2.87kPa] ground snow load rated
- Meets IBC and ASCE standards for structural loading
- Wind tunnel testing industry leader CPP and rated for 175mph [78m/s] wind speed
- Warranty 20 years

## Calculations

- 100% code compliant designs for any locality
- Structural PE stamped drawings and calculations
- Individual system design calculations based on regional climatic load values according to IBC & ASCE
- Patent pending profile geometries with optimum material utilization

## Material

- Rails, panel supports, wind deflectors. Optional at additional cost: fire guards, G180 galvanized steel, row end wind deflectors, EPDM blocks
- Panel clips: stainless steel
- Hardware: stainless steel or magnacoat

## System Geometry / Layout Spacing

- Panel row spacing: 5 and 10° tilt option; 10.16/18.09" [258 mm/459 mm]
- Shade angles: 5 and 10° tilts; 22° shade angle

## Grounding

- Racking system has integrated grounding utilizing ETL / UL teathed module clips on two corners of each module
- Grounding must be done by electrician at row end of array

### GameChange Solar

152 W 57 Street 17FL New York, NY 10019  
Email: [info@gamechangesolar.com](mailto:info@gamechangesolar.com)

Phone: 212-388-5160  
Fax: 646-607-2223

**\*Disclaimer:** GameChange Solar provides this documentation without warranty in any form either expressed or implied. GameChange Solar may revise this document at any time without notice.