

**OVER 3.2 GW SOLD**

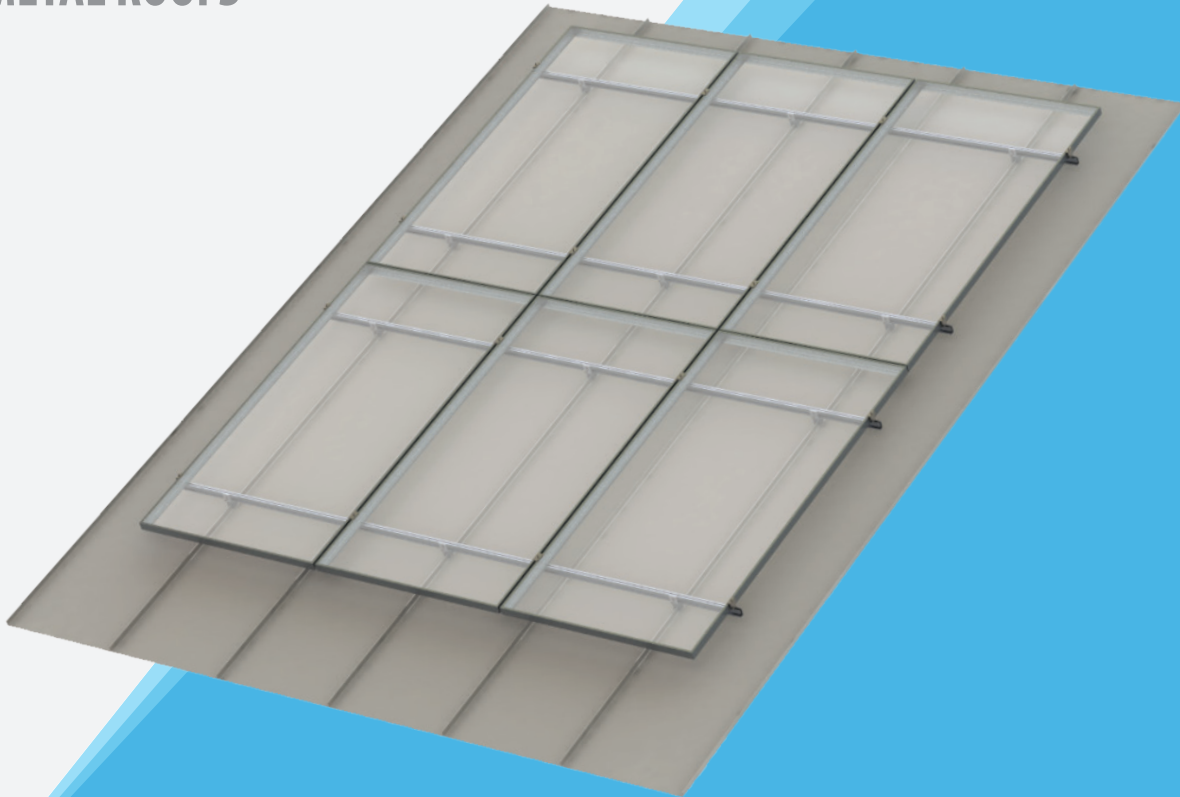
Every System For Your Every Need



# STANDING SEAM ROOF SYSTEM

FAST INSTALLING, COST-EFFECTIVE,  
BALLAST FREE, COMPLETE SOLUTION  
FOR METAL ROOFS

TECHNICAL  
DATASHEET



## FAST INSTALL WITH MINIMAL COMPONENTS

Available in both 1 & 2 panels up in portrait

Seam clamps available for standard metal seam roofs

Supports all poly modules for all vendors

Includes rails, rail jumpers, L-feet, seam clamps,  
panel clamps and all hardware

Integrated grounding and  
wire management

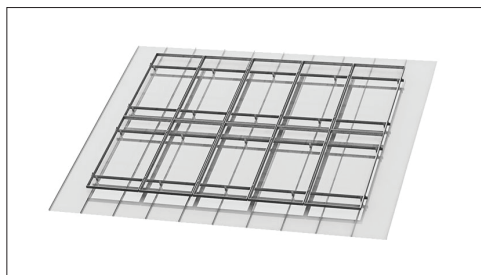
Full layout and engineering  
analysis for every project

ZERO BALLAST  
NO PENETRATIONS



# OVER 3.2 GW SOLD

Every System For Your Every Need



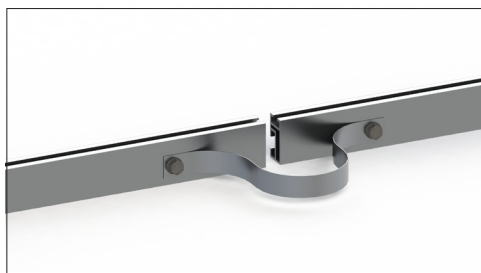
Minimal components lead to quick deployment of system



Rail mount includes rails, rail jumpers, L-feet, seam clamps, self grounding UL listed panel clamps & all hardware



UL listed panel clamps bond module frames to racking assembly



Aluminum jumper strip provided for bonding rails

## Features

- Fast install with minimal components
- Fire proof, durable aluminum and stainless steel components
- Zero ballast and no penetrations
- Aluminum jumper strip provided for bonding rails
- Full layout and engineering analysis for every project

## Test & Certification

- Unique design innovations with patents pending
- ETL / UL 467 GameChange teethed module clips included
- Rated for 175 mph [78 m/s] wind and 90 psf [4.3 kPa] ground snow load
- Meets IBC and ASME standards for structural loading
- Warranty 20 years

## Calculations

- 100% code compliant designs for any locality
- Structural PE stamped drawings and calculations
- Design loads according to any state or local building code

## Material

- Rails: 6005 aluminum, seam clamps: 6061 aluminum
- L feet: aluminum
- Hardware: Stainless steel or magnacoat steel

## Distribution Load

- Typical roof loading: panel weight plus .3 psf [.01Pa] for racking

## Grounding

- Racking system has UL 2703 integrated grounding utilizing UL 467 listed teethed panel clips and jumpers provided by GameChange at the end of each row

## Panel Spacing

- .25 to .50" [6.3 to 12.7 mm]

**\*Disclaimer:** GameChange Solar provides this documentation without warranty in any form either expressed or implied. GameChange Solar may revise this document at any time without notice.

### GameChange Solar

152 W 57 Street 17FL New York, NY 10019  
Email: [info@gamechangesolar.com](mailto:info@gamechangesolar.com)

Phone: 212-388-5160  
Fax: 646-607-2223